



Zionsville Chapter of P. R. E. ★ Chartered in October, 2003
CHAPTER NEWSLETTER Month Ending December, 2011

BIGGEST DECEMBER REFERRAL GIVERS

1st Place: Brent & Ivy Emerick with 12
2nd Place: Susan Van Den Heuvel with 3

Monthly Scorecard

MEMBER NAME	CATEGORY	GAV MO.	GAV YTD	REC MO.	REC YTD
Crain, Rose	Health & Nutrition	1	18	0	14
Elliott, Bill	Handyman Services	0	10	0	19
Emerick, Brent & Ivy	Financial Advisor	12	149	0	12
Freeman, Jo Eva	Banker-Personal	0	4	0	6
Frutkin, Larry	Attorney - Estate Planning	0	13	0	9
Ice, Mike	Personal Trainer	0	16	2	38
Miller, Russ	Auto & Mechanical Repair	0	1	2	150
Nail, Randy	Mortgage Lender	0	25	0	10
Pearson, Dave	Insurance-Medicare & Health	0	17	0	10
Rydell, Matt	Insurance-Life & Health	0	50	0	7
Smidt, Carrie	Funeral Service	0	0	0	0
Steffey, Mike	Insurance - P & C	0	5	1	45
Thrasher, Phil	Attorney - Business	2	113	0	10
Titone, Len	Accounting	1	26	2	23
Van Den Heuvel, Susan	Realtor - Residential	1	30	0	8
Whalen, Jerry	Chiropractor	1	17	1	158
Past Members		0	108	0	63
NON-Members		0	0	0	0
New Members					
New Mbr Bonus				10	20
TOTALS		18	602	18	602

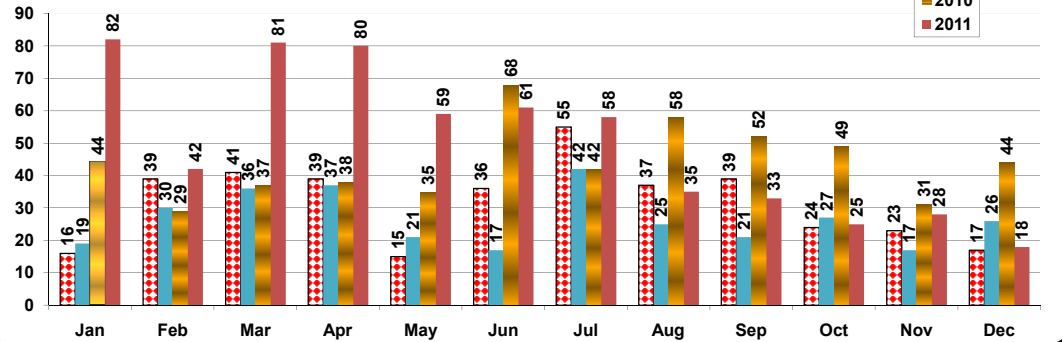


"TRACK DOWN A MEMBER"
 Be part of PRE's
 75+ Club!
10 referral points added by referring a new member.

THE PRE MISSION STATEMENT

Professional Referral Exchange is an organization of professional men and women; one in each business category, who promote each other by using a proven networking model for increasing business through the exchange of qualified referrals.

REFERRAL HISTORY CHART



WELCOME NEW MEMBERS

The Zionsville Chapter Membership increased by one during the month of December.

A BIG PRE WELCOME TO:

Carrie Smidt, Funeral Service

We need to continue contacting people we know and invite them as guests! Each new member represents 250 people to do business with!!

MEMBERS WHO RECEIVED NO REFERRALS:

60% of our members did not receive a referral this month!

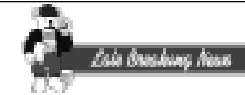
LET'S ALL BE A SALES TEAM MEMBER FOR EACH OTHER!

*Remember.....Givers receive!
 Let's all start writing referrals for those members!*

May you prosper in 2012

Our Members Commit To:

- ◆ Regularly attend meetings or send an alternate.
- ◆ Give a minimum of two referrals per month.
- ◆ Maintain high ethical and professional conduct.
- ◆ Help the organization grow by bringing guests.
- ◆ Use members services whenever possible.



VISIT PRE's WEB SITE AT
www.prorefx.com